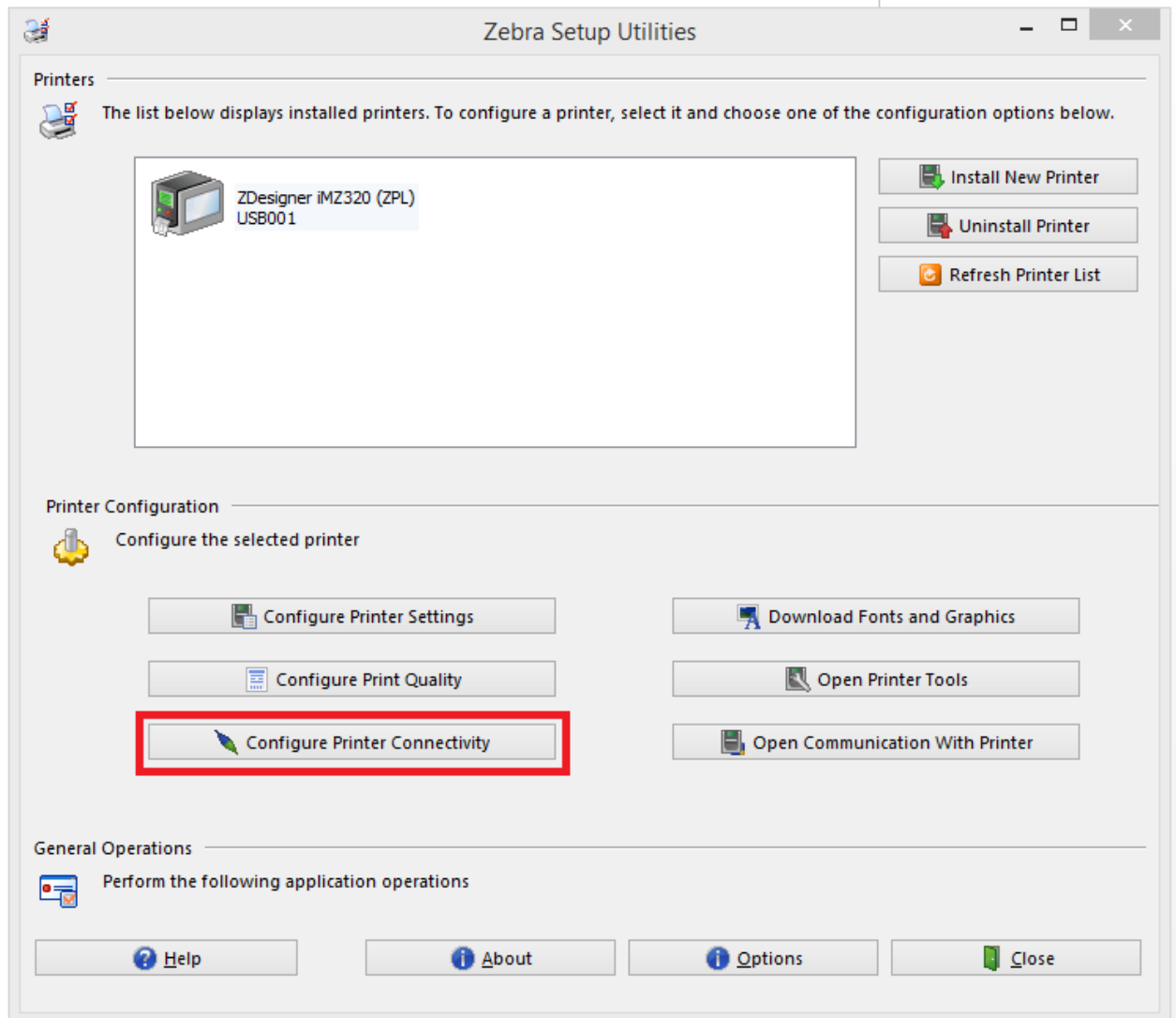
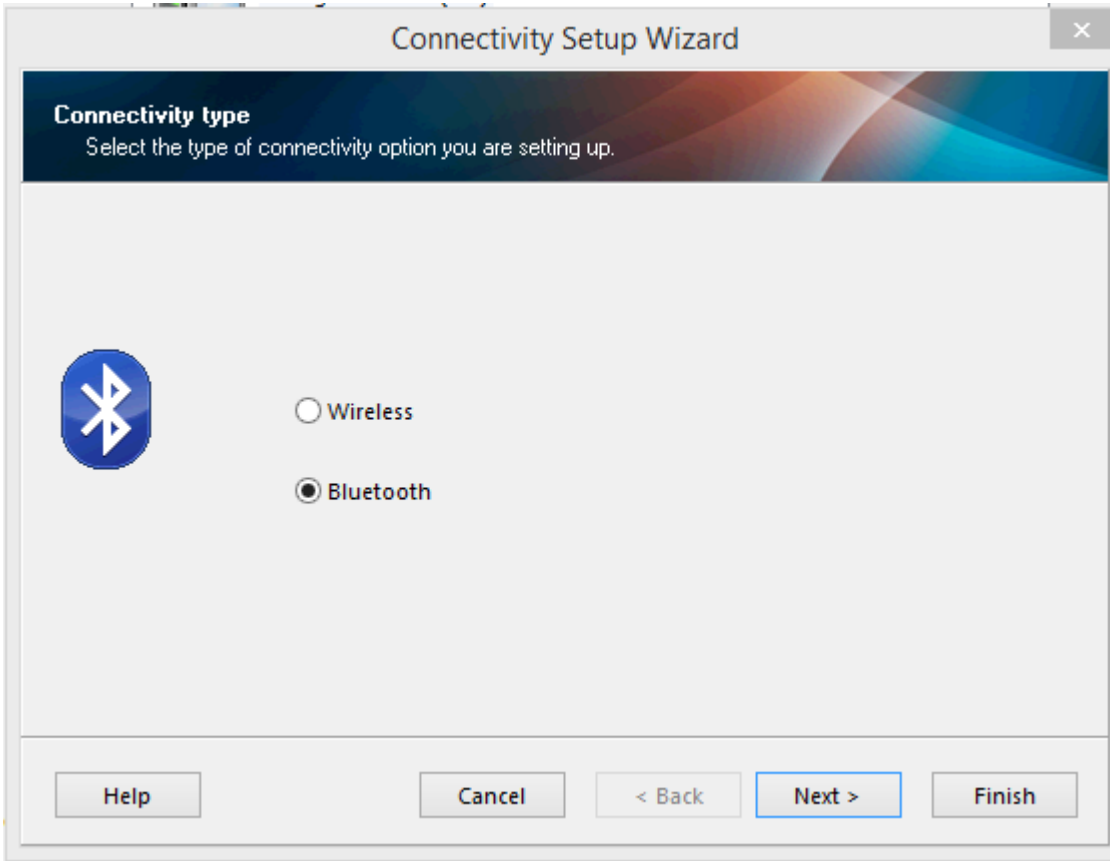


## How to configure the ZEBRA iMZ320 to work with Android Devices

1. Open Zebra Setup Utilities
2. Select your printer (if not already selected) from the list of printers
3. Click on the *Configure Printer Connectivity* button



4. Select *Bluetooth* from the options and then select *Next*



5. Change the *Enable Reconnect* setting from *iOS Only* to *Off*

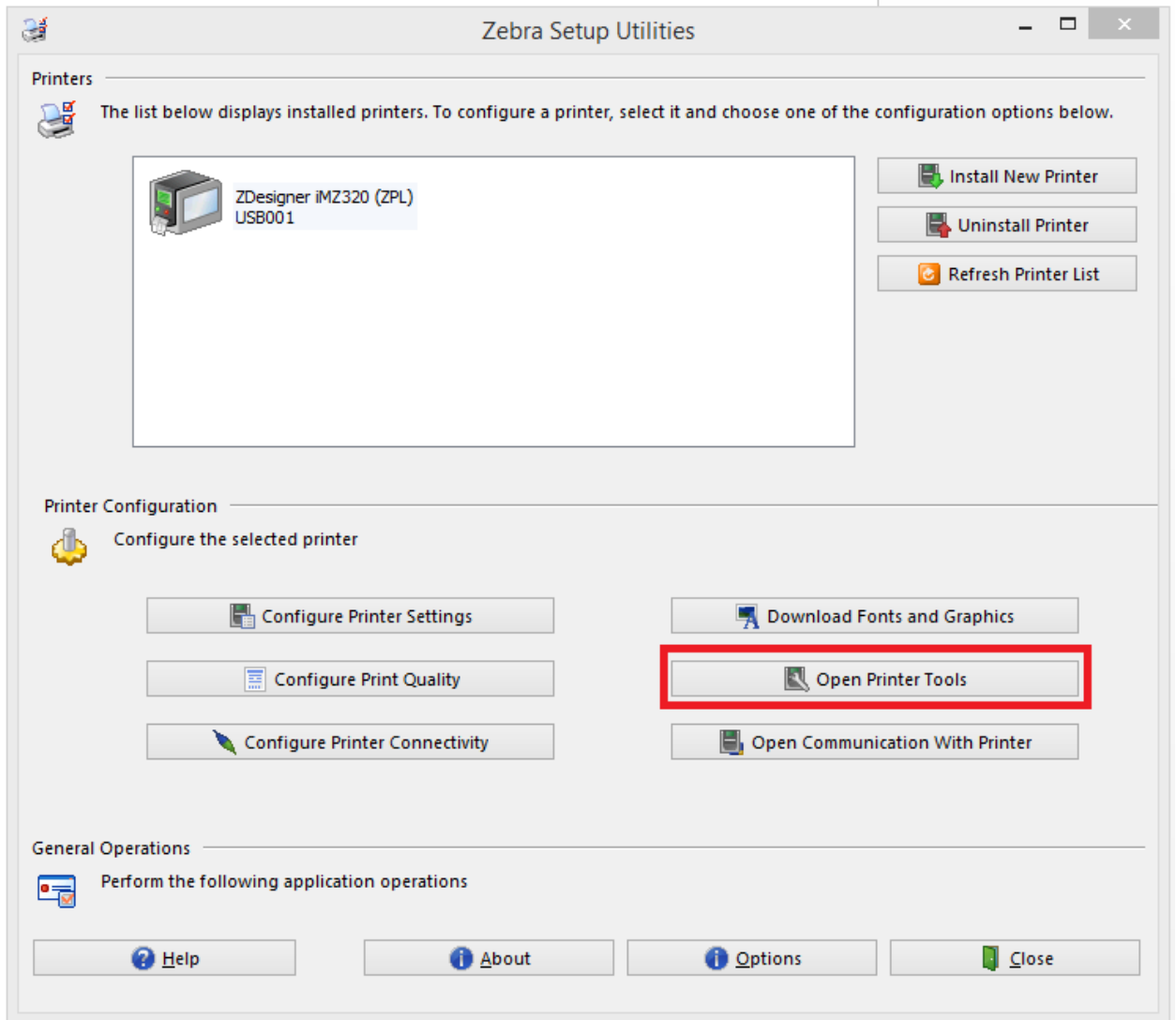
The screenshot shows the 'Connectivity Setup Wizard' window with the 'Bluetooth settings' tab selected. The settings are as follows:

- Enabled:
- Friendly name:
- Discoverable: On
- Minimum Security Mode: 1
- Authentication pin:
- Bonding: On
- Enable Reconnect: iOS Only (highlighted with a red box)
- Pairing Method: Numeric Comparison - Print Number

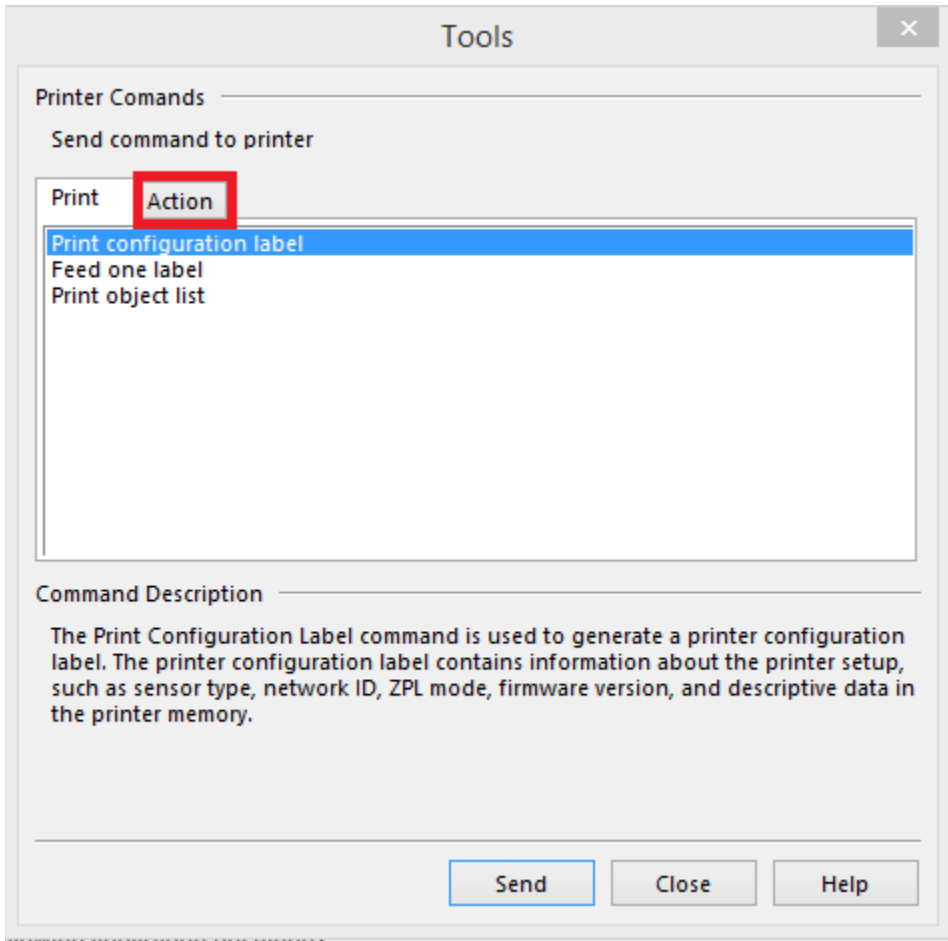
At the bottom of the wizard, there are buttons for Help, Cancel, < Back, Next >, and Finish. Below the wizard window, the 'Enable Reconnect' dropdown menu is shown again, now set to 'Off'.

- a. If you know your printers Bluetooth settings you can fill them in here and then press *Finish* and then your printer will update
  - b. If you don't know your printers Bluetooth settings then press *Next* and continue with the steps in this document
6. Highlight the line that says `! U1 setvar "bluetooth.enable_reconnect" "off"` and with that highlighted, right-click and select *Copy*

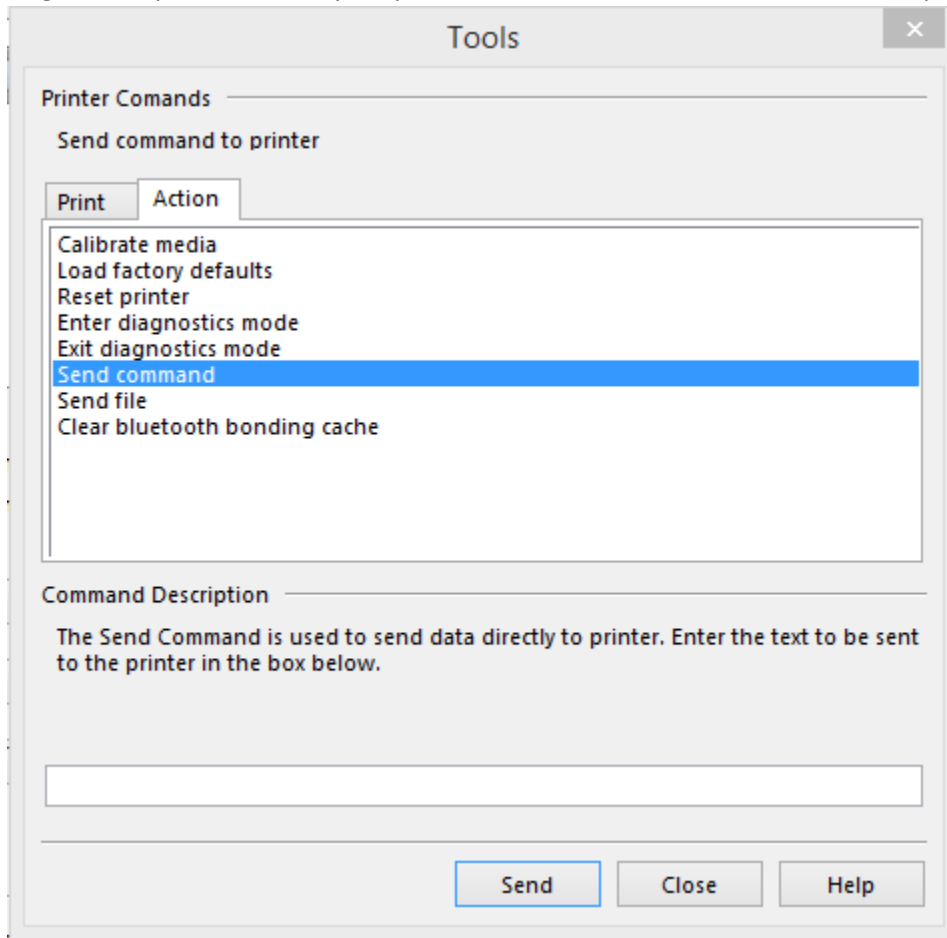
7. Hit *Cancel* so you return to the Zebra Setup Utilities window and select *Open Printer Tools*



8. Within the Tools window select the *Action* tab

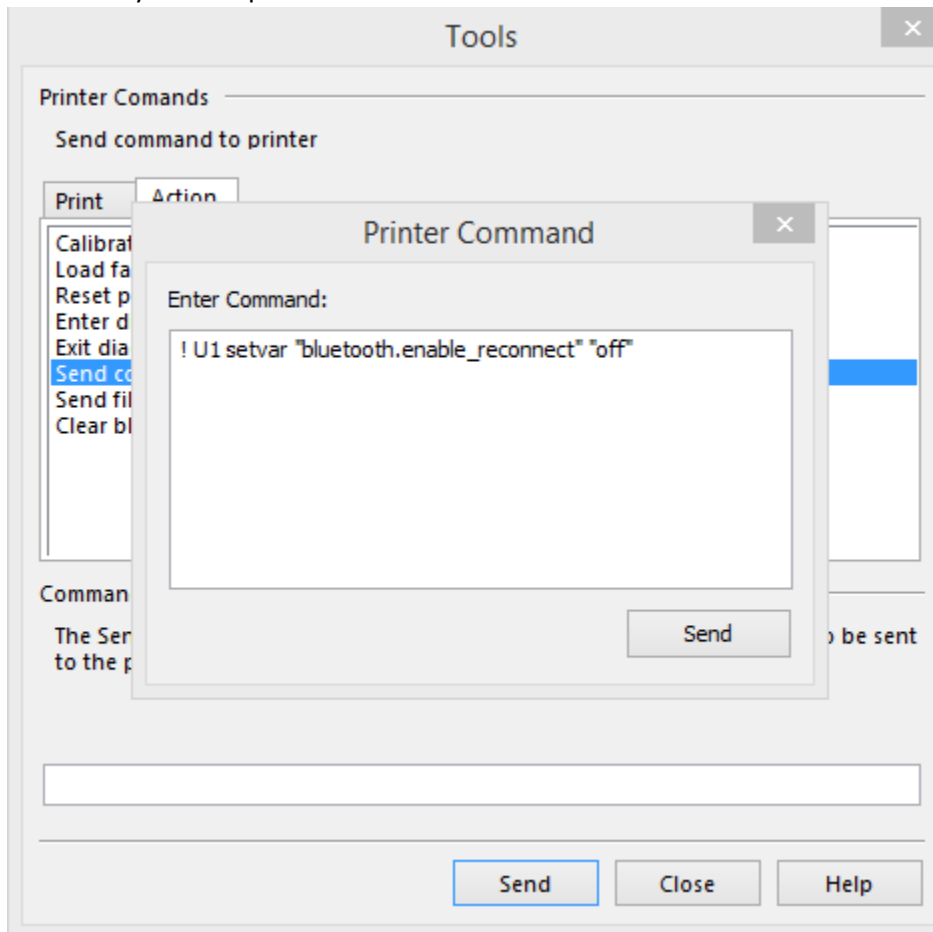


9. From the list of commands select *Send Command* and press *Send*. Do not paste anything in the single line input field, once your press *Send Command* another window will open.



10. With the *Printer Command* window open, right-click and Paste the command from before and then press the *Enter* key one time so the cursor should be on a new line right below the

command you have pasted.



11. Press the *Send* button to send the command to the printer. Once you *Close* the Tools and *Close* the Zebra Setup Utilities you are now ready to begin using your printer with Android devices.